

---

# ITScriptNet® - OMNI™

## Instructions for Loading, Licensing, and Running

---

### 1. Download the software from our web site:

- To download the ITScriptNet software to your computer, go to:  
[http://www.z-space.com/itscriptnet/itscriptnet\\_demo\\_form.asp](http://www.z-space.com/itscriptnet/itscriptnet_demo_form.asp)
- Select **ITScriptNet Runtime** (second link).
- In the small pop up window, select SAVE and save the download file to a folder on your computer, such as C:\Temp.
- After the download completes, go to that folder and double-click the executable to install the software to its default directory..

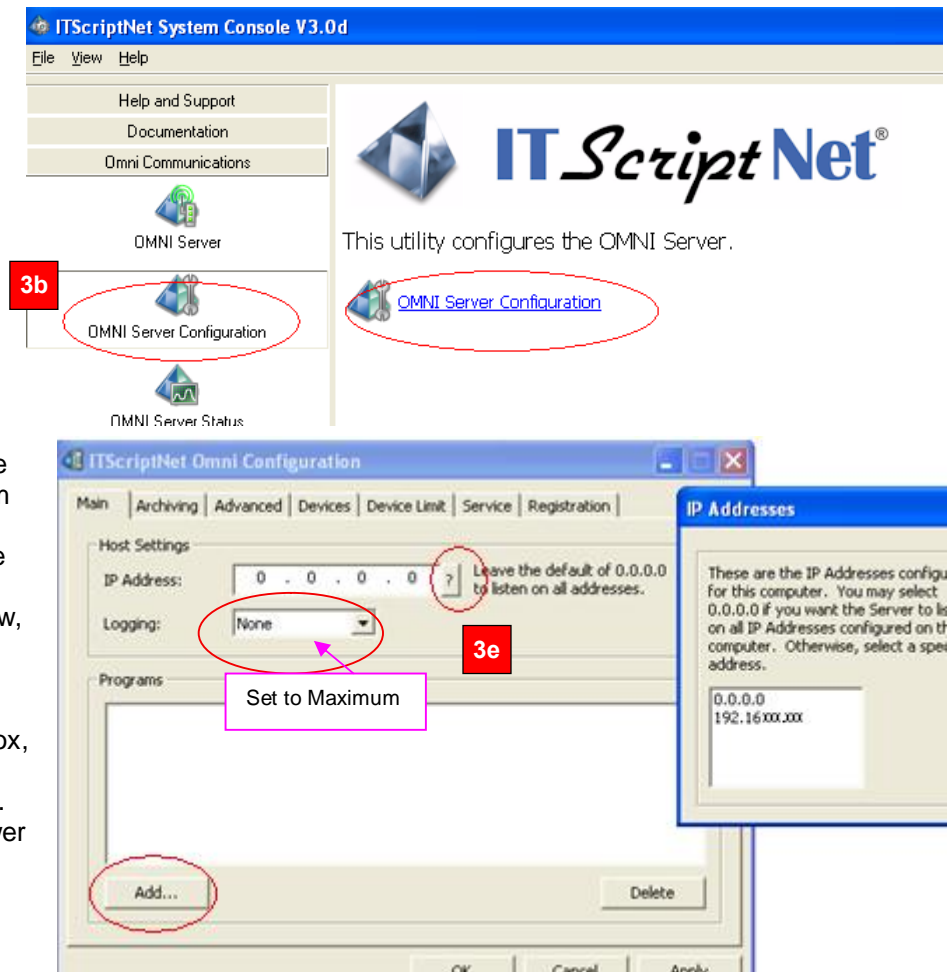



### 2. Install the Runtime software to your computer:

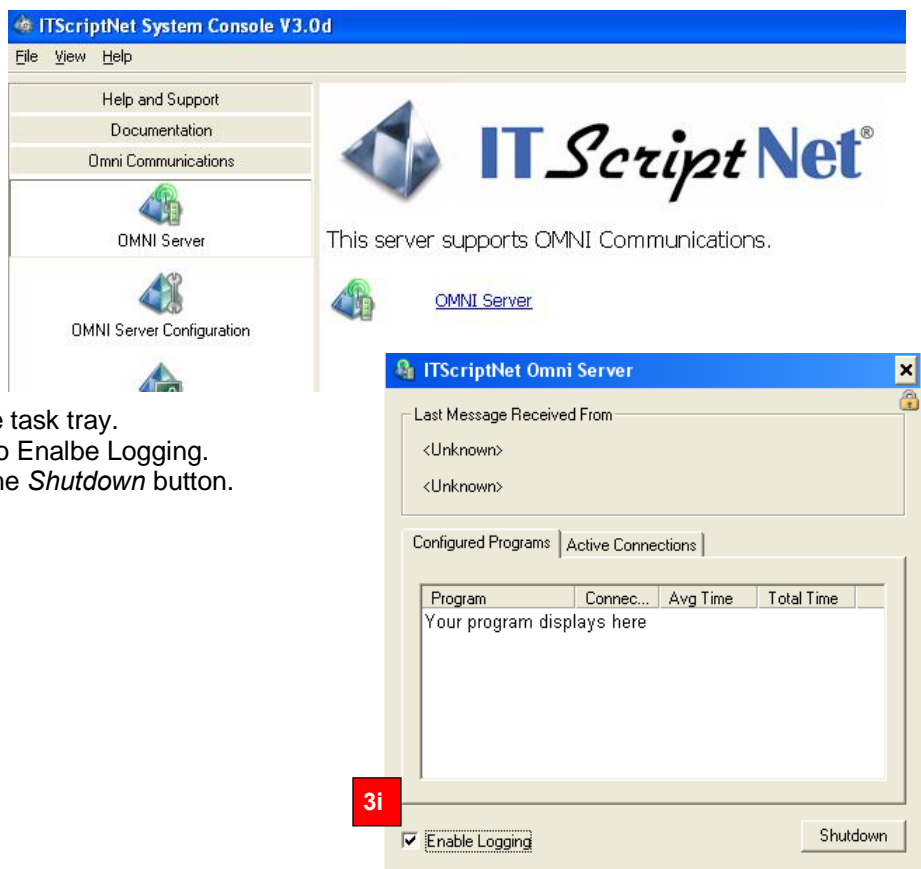
- Double-click the newly downloaded .exe file. This will begin the installation wizard which will walk you through the installation of the software. Follow the on-screen instructions.
- For the Destination Folder, save the installation to the default folder, then click *Next*.
- Click *Next* again to begin copying the files. It will take a few minutes.
- When the setup is complete, click *Finish*. The System Console will open. A shortcut icon to the System Console will be placed on your desktop in order to facilitate navigating the **ITScriptNet** programs, utilities, and documentation.

### 3. Setup the OMNI Server

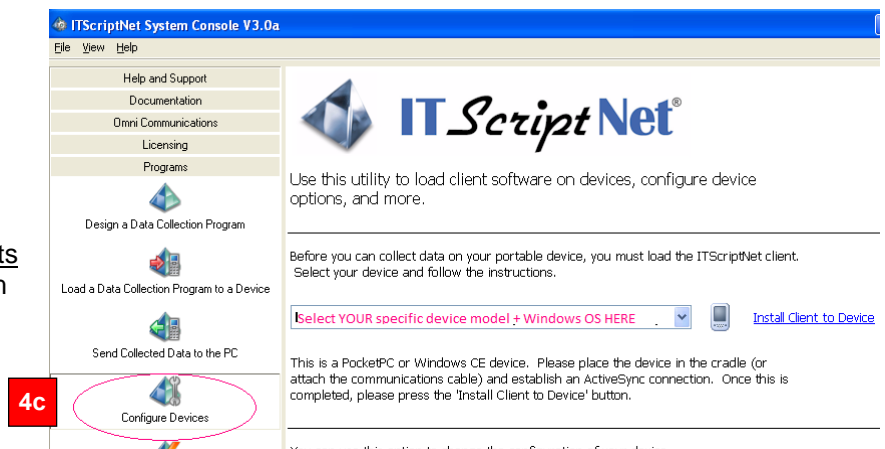
- In the System Console, select the Omni Communications tab in the left pane.
- Select Omni Server Configuration.
- Select the Omni Server Configuration link in the selection window in the right pane.
- On the Configuration screen, click the *Add* button in the Programs section (middle of the screen) and browse for the ITScriptNet -designed program (ending in file extension .itb). The program will display in the large Programs box.
- In the upper part of this window, click the small **?**. This will display the IP address of this server. Make a note of it.
- ZEROS. In the IP Address box, do NOT change the zeros. these must be left as all zeros.
- Click *Apply* then *OK* in the lower right of the screen.



- h. Back in the System Console, select *Omni Communications* tab, select *Omni Server* from the left pane, then again in the selection window. The Omni Server window will pop up and you should see your program listed in the Configured Programs section. The Omni Server must be running in order for the devices to communicate with the PC. Clicking on the  will minimize the Omni Server to the task tray.
- i. Check the box in the lower left to Enable Logging.
- j. To stop the Omni server, click the *Shutdown* button.



4. **Preparing the data collection device**
  - a. Establish an ActiveSync connection between the PC and device.
  - b. Select the *Programs* tab in the System Console
  - c. Select *Configure Devices* from the left pane.
  - d. From the Configure Devices screen, select your specific device model and its Windows mobile operating system from the drop down list.
  - e. Once selected, click *Install Client to Device* and follow the on-screen instructions.

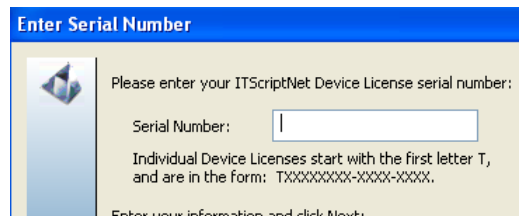


5. **Licensing:**
  - a. On the device, remain at the mobile Windows screen. close any running programs; ITScriptNet must not be running on the device.
  - b. Establish an ActiveSync connection with the device.
  - c. Select the *Licensing* tab in the System Console
  - d. Select *Device License Management* from the left pane.
  - e. Select *Add Device License*.
  - f. The computer must have an active Internet connection. Read the License information screen.



(process continued next page)

- g. Click the Automated Registration button.
- h. Follow the on-screen instructions.
- i. Enter in the space provided the Device License serial number that you wish to register to the currently connected device, making sure all the dashes are in place, any 0s are zeros.



**Enter Serial Number**

Please enter your ITScriptNet Device License serial number:

Serial Number:

Individual Device Licenses start with the first letter T, and are in the form: TXXXXXXXX-XXXX-XXXX.

Enter your information and click Next:



**ITScriptNet Registration**

Register Your Copy of ITScriptNet.

To unlock your copy of ITScriptNet, you must register your Serial Number. If you do not register your Serial Number, your software will operate in Demo mode.

**Automated Registration**

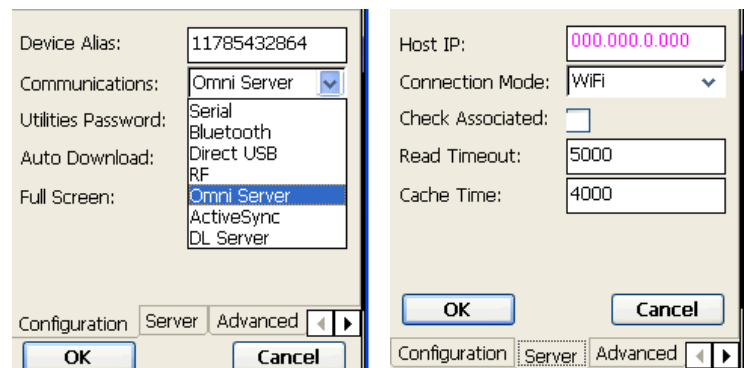
The Automated Registration process requires an active Internet connection. If this PC does not have an Internet connection, you can also register your Serial Number manually by pressing this button:

Manual Registration

Back Next Cancel

## 6. Set up the device communications

- a. On the device, run **ITScript Net**.
- b. Tap on Utilities, then tap on Configuration.
- c. In the drop-down for Communications, select **Omni Server**.
- d. Next, along the bottom of the screen, select the Server tab.
- e. In the Host IP box, enter the IP address of the computer that is running the ITScriptNet Omni server (from Step 3e above).



Device Alias:

Communications:

Utilities Password:

Auto Download:

Full Screen:

Configuration Server Advanced

OK Cancel

Host IP:

Connection Mode:

Check Associated: ☐

Read Timeout:

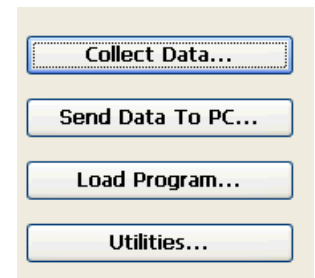
Cache Time:

OK Cancel

Configuration Server Advanced

## 7. Load Program to the device

- a. On the device, run **ITScript Net**.
- b. Select **Load Program** from the main Client menu. If your OMNI Server is configured properly and running, you should see filenames blinking on the device as they load.
- c. This program-load process also loads any associated/ updated validation or images files to the device.



Collect Data...

Send Data To PC...

Load Program...

Utilities...

## 8. Collect Data

- a. On the device, run **ITScript Net**, if not already running.
- b. Select **Collect Data** from the main Client menu. If only one program was loaded to the device, that program will begin running. If more than one program was loaded to the device, you will be presented with a list of programs from which to select.

## 9. Transfer Collected Data . when in batch transfer mode

- a. After the current data collection session has been completed, return the device to its cradle.
- b. Return to the ITScriptNet main menu on the device and tap the Send Data to PC button to transfer the collected data from the device to the PC.

Please consult the [User Guide for answers to questions](#) . the user guides can be found in the Documentation tab in the left pane of the System Console. If you are unable to find the answers you need, contact Z-Space by email: [support@z-space.com](mailto:support@z-space.com).